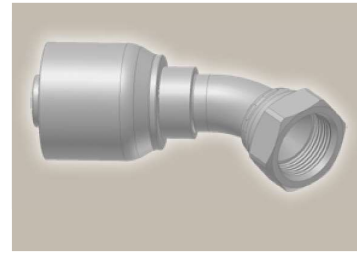
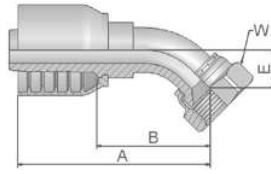


37 Female JIC 37° – Swivel 45° Elbow

ISO 12151-5-SWE 45° – DKJ 45°

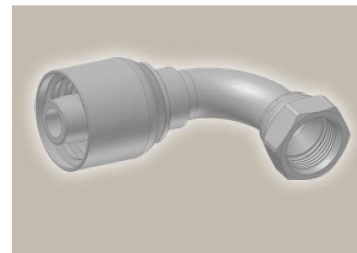
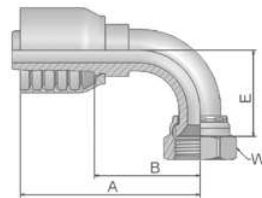


| Part Number | Hose I.D. | | | | Thread UNF | A mm | B mm | E mm | W mm |
|-----------------|-----------|------|------|------|---------------|---------|---------|---------|---------|
| | DN | Inch | Size | mm | | | | | |
| 13770-6-6-SM | 10 | 3/8 | -6 | 9.5 | 9/16x18 | 61 | 32 | 11 | 19 |
| 13770-8-8-SM* | 12 | 1/2 | -8 | 12.7 | 3/4x16 | 73 | 38 | 14 | 22 |
| 13770-10-8-SM* | 12 | 1/2 | -8 | 12.7 | 7/8x14 | 78 | 43 | 17 | 27 |
| 13770-8-10-SM* | 16 | 5/8 | -10 | 15.9 | 3/4x16 | 78 | 39 | 15 | 22 |
| 13770-10-10-SM* | 16 | 5/8 | -10 | 15.9 | 7/8x14 | 83 | 42 | 16 | 27 |
| 13770-12-10-SM | 16 | 5/8 | -10 | 15.9 | 1 1/16x12 | 88 | 48 | 21 | 32 |
| 13770-12-12-SM | 19 | 3/4 | -12 | 19.1 | 1 1/16x12 | 91 | 52 | 20 | 32 |
| 13770-16-16-SM | 25 | 1 | -16 | 25.4 | 1 5/16x12 | 111 | 66 | 24 | 41 |
| 13770-20-16-SM | 25 | 1 | -16 | 25.4 | 1 5/8x12 | 114 | 67 | 26 | 50 |

* These fittings contain a dual seat that accepts both JIC (37°) and SAE (45°) male configurations.

39/3W Female JIC 37° SAE 45° – Dual Flare Swivel Female 90° Elbow

ISO 12151-5-SWES – DKJ 90°



| Part Number | Hose I.D. | | | | Thread UNF | A mm | B mm | E mm | W mm |
|----------------|-----------|------|------|------|---------------|---------|---------|---------|---------|
| | DN | Inch | Size | mm | | | | | |
| 13970-6-6-SM | 10 | 3/8 | -6 | 9.5 | 9/16x18 | 57 | 28 | 23 | 19 |
| 13W70-8-6-SM | 10 | 3/8 | -6 | 9.5 | 3/4x16 | 64 | 35 | 29 | 22 |
| 13970-12-10-SM | 16 | 5/8 | -10 | 15.9 | 1 1/16x12 | 87 | 48 | 48 | 32 |
| 13970-12-12-SM | 19 | 3/4 | -12 | 19.1 | 1 1/16x12 | 89 | 50 | 48 | 32 |
| 13970-16-12-SM | 19 | 3/4 | -12 | 19.1 | 1 5/16x12 | 89 | 49 | 56 | 41 |
| 13970-12-16-SM | 25 | 1 | -16 | 25.4 | 1 1/16x12 | 99 | 54 | 46 | 32 |
| 13970-16-16-SM | 25 | 1 | -16 | 25.4 | 1 5/16x12 | 109 | 64 | 56 | 41 |
| 13970-20-16-SM | 25 | 1 | -16 | 25.4 | 1 5/8x12 | 111 | 64 | 62 | 50 |

* These fittings contain a dual seat that accepts both JIC (37°) and SAE (45°) male configurations.

Approved **fitting series** for hose types, depending on size:

70 | 371LT | 372 | 372RH | 372TC | 701 | 701 TC | F42-8